

RESOLUTION NO. 2019-197

**A RESOLUTION OF THE CITY COUNCIL OF THE CITY OF ELK GROVE
APPROVING THE FINAL MAP FOR THE MILESTONE SUBDIVISION (SUBDIVISION
NO. 15-050) AND AUTHORIZING THE CITY MANAGER TO EXECUTE THE
SUBDIVISION IMPROVEMENT AGREEMENT (CEQA EXEMPT)**

WHEREAS, the City of Elk Grove (City) approved a Tentative Subdivision Map (TSM) for the Crooked Creek Estates Project, now known as Milestone Subdivision Project (Subdivision No. 15-050) on January 5, 2005, and subsequently approved a new TSM on December 14, 2016; and

WHEREAS, staff has reviewed the Final Map for Milestone Subdivision (Subdivision No. 15-050) (Final Map) and finds it technically correct and that all applicable Final Map conditions of approval have been satisfied; and

WHEREAS, a Subdivision Improvement Agreement for the Final Map has been approved by the City Attorney and bonds have been posted to the City for the construction of the required improvements; and

WHEREAS, the Final Map is statutorily exempt from the California Environmental Quality Act (CEQA) Statutory Exemptions, Title 14 of the California Code of Regulations Section 15268(b)(3) Ministerial Projects, approval of final subdivision maps, and a Notice of Exemption will be filed with the County of Sacramento after the filing of this map.

NOW, THEREFORE, BE IT RESOLVED by the City Council of the City of Elk Grove as follows:

- 1) The location and configuration of the lots to be created by the Final Map for Milestone Subdivision (Subdivision No. 15-050) substantially comply with the previously-approved Tentative Subdivision Map; and
- 2) The Final Map is statutorily exempt from the California Environmental Quality Act (CEQA), Statutory Exemptions, Title 14 of the California Code of Regulations Section 15268(b)(3) Ministerial projects, approval of final subdivision maps; and
- 3) The City Council of the City of Elk Grove, pursuant to Government Code Section 66458, hereby approves the Final Map for Milestone Subdivision (Subdivision No. 15-050), a copy of which is hereby attached as Exhibit A and made part of this Resolution; and
- 4) Authorizes the City Manager to execute the Subdivision Improvement Agreement for the Final Map and directs the City Clerk to transmit the Final Map to the County Recorder of the County of Sacramento for filing.

PASSED AND ADOPTED by the City Council of the City of Elk Grove this 11th day of September 2019



STEVE LY, MAYOR of the
CITY OF ELK GROVE

ATTEST:



JASON LINDGREN, CITY CLERK

APPROVED AS TO FORM:



JENNIFER ALVES,
ASSISTANT CITY ATTORNEY

EXHIBIT A

OWNER'S STATEMENT

THE UNDERSIGNED HEREBY CONSENTS TO THE PREPARATION AND RECORDATION OF THIS FINAL MAP OF "MILESTONE SUBDIVISION" AND OFFERS FOR DEDICATION AND DOES HEREBY DEDICATE TO ANY AND ALL PUBLIC USES WAYNE HEINTZ STREET, BLACK SWAN DRIVE, CHAROLAIS WAY, LEGENDARY COURT, ODYSSEY CIRCLE, TRAVELER COURT, MILEPOST CIRCLE, AND WYLAND DRIVE SHOWN HEREON WITHIN THESE BOUNDARIES.

THE FOLLOWING ARE DEDICATED AS EASEMENTS:

EASEMENTS FOR PLANTING AND MAINTAINING TREES, ELECTROLINERS, TRAFFIC CONTROL DEVICES, WATER AND GAS PIPES, AND FOR UNDERGROUND AND OVERHEAD WIRES AND CONDUITS FOR ELECTRIC, TELEVISION AND TELEPHONE SERVICES, TOGETHER WITH ANY AND ALL APPURTENANCES PERTAINING THERETO, ON, OVER, UNDER AND ACROSS THOSE STRIPS OF LAND 12.5 FEET IN WIDTH LYING CONTIGUOUS TO THE PUBLIC DRIVES, WAYS AND COURTS SHOWN HEREON AND DESIGNATED "PUBLIC UTILITY EASEMENT" (P.U.E.).

RIGHT OF WAY AND EASEMENTS ON BEHALF OF THE PUBLIC FOR THE USE OF A PEDESTRIAN WALKWAY, TOGETHER WITH AN AND ALL APPURTENANCES PERTAINING THERETO ON, OVER, UNDER, AND ACROSS THOSE STRIPS OF LAND SHOWN HEREON AND DESIGNATED "PEDESTRIAN EASEMENT" (P.E.).

THE FOLLOWING IS GRANTED IN FEE SIMPLE TO THE CITY OF ELK GROVE:

LOT D.

THE FOLLOWING IS A DEDICATION OF ACCESS RIGHTS:

THE EXCLUSIVE RIGHT OF VEHICULAR INGRESS AND EGRESS IS GRANTED TO THE CITY OF ELK GROVE ACROSS LOTS LINES SHOWN HEREON AND DESIGNATED "NO INGRESS AND EGRESS RIGHTS LINE" (//////////).

TAYLOR MORRISON OF CALIFORNIA, LLC

BY: Jay Pawlet

NOTARY ACKNOWLEDGMENT:

A NOTARY PUBLIC OR OTHER OFFICER COMPLETING THIS CERTIFICATE VERIFIES ONLY THE IDENTITY OF THE INDIVIDUAL WHO SIGNED THE DOCUMENT TO WHICH THIS CERTIFICATE IS ATTACHED, AND NOT TO THE TRUTHFULNESS, ACCURACY OR VALIDITY OF THAT DOCUMENT.

COUNTY OF Sacramento
 STATE OF CALIFORNIA
 ON August 14, 2019 BEFORE ME, L. Hall, A NOTARY PUBLIC PERSONALLY APPEARED
Jay Pawlet

WHO PROVED TO ME ON THE BASIS OF SATISFACTORY EVIDENCE TO BE THE PERSON(S) WHO'S NAME(S) IS/ARE SUBSCRIBED TO THE WITHIN INSTRUMENT ACKNOWLEDGED TO ME THAT HE/SHE/THEY EXECUTED THE SAME IN HIS/HER/their AUTHORIZED CAPACITIE(S) AND BY HIS/HER/THEIR SIGNATURE(S) ON THE PERSON(S) ACTED, EXECUTED THE INSTRUMENT.

I CERTIFY UNDER PENALTY OF PERJURY UNDER THE LAWS OF THE STATE OF CALIFORNIA THAT THE FORGOING PARAGRAPH IS TRUE AND CORRECT.

WITNESS MY HAND AND OFFICIAL SEAL.

SIGNATURE L. Hall
 PRINCIPAL PLACE OF BUSINESS IS: Sacramento
 COMMISSION EXPIRES: August 5, 2022
 COMMISSION # OF NOTARY: 21414285


Peabody Engineering
 1700 Alhambra Blvd., Suite 102
 Sacramento, CA. 95816
 (916) 731-6088 office (916) 731-9089 fax



SUBDIVISION NO. 15-050
MILESTONE SUBDIVISION
 A PORTION OF THE SOUTHWEST 1/4 OF SECTION 5,
 T. 6N., R. 6E., MOUNT DIABLO MERIDIAN
 CITY OF ELK GROVE, COUNTY OF SACRAMENTO, STATE OF
 CALIFORNIA
 AUGUST 2019
 SHEET 1 OF 9

SURVEYOR'S STATEMENT:

THIS MAP WAS PREPARED BY ME OR UNDER MY DIRECTION AND IS BASED UPON A FIELD SURVEY IN CONFORMANCE WITH THE REQUIREMENTS OF THE SUBDIVISION MAP ACT AND LOCAL ORDINANCES AT THE REQUEST OF TAYLOR MORRISON OF CALIFORNIA, IN JULY 2018. I HEREBY STATE THAT THE MONUMENTS ARE OF THE CHARACTER AND OCCUR AT THE POSITIONS INDICATED AND WILL BE SET BY JULY 31, 2020 AND THAT SET MONUMENTS WILL BE SUFFICIENT TO ENABLE THE SURVEY TO BE RETRACED AND THE NOTES TO ALL CENTERLINE MONUMENTS WILL BE PROVIDED TO THE CITY OF ELK GROVE PRIOR TO THE ABOVE DATE. THAT THIS FINAL MAP SUBSTANTIALLY CONFORMS TO THE APPROVED OR CONDITIONALLY APPROVED TENTATIVE MAP.

SUBDIVISION ACREAGE: 40.7 AC.

RIGHT OF WAY ACREAGE: 16.06 AC.

TOTAL NUMBER OF LOTS: 121 RESIDENTIAL - 4 LETTERED

JOHN MATTHEW, L.S. 4600

DATE

SURVEYOR'S STATEMENT:

I HEREBY STATE THAT I HAVE EXAMINED THIS SUBDIVISION NO. 15-050, MILESTONE SUBDIVISION, AND FIND IT TO BE TECHNICALLY CORRECT

BILL STANTON, L.S. NO. 7292
 EXP. DATE: 12-31-2020
 CITY OF ELK GROVE

DATE

RECORDER'S STATEMENT:

FILED THIS _____ DAY OF _____ 2019, AT _____ M. IN

BOOK _____ OF MAPS, AT PAGE _____ AT THE REQUEST OF
 PEABODY ENGINEERING, TITLE TO THE LAND INCLUDED IN THIS FINAL MAP
 BEING VESTED AS PER CERTIFICATE NUMBER _____ ON FILE
 IN THIS OFFICE.

RECORDER OF SACRAMENTO COUNTY
 STATE OF CALIFORNIA

BY: _____ DEPUTY
 DOCUMENT NO.: _____
 FEE: _____



CITY ENGINEER'S STATEMENT:

I HEREBY STATE THAT I HAVE EXAMINED THIS FINAL MAP OF "MILESTONE SUBDIVISION NO. 15-050" AND FIND IT TO SUBSTANTIALLY COMPLY WITH THE TENTATIVE MAP APPROVED BY THE CITY COUNCIL OF ELK GROVE ON DECEMBER 14, 2016 AND ANY APPROVED ALTERATIONS THEREOF; THAT ALL APPLICABLE PROVISIONS OF THE SUBDIVISION MAP ACT AND LOCAL ORDINANCES HAVE BEEN COMPLIED WITH.

ROBERT K. MURDOCH, R.C.E. NO. 47644
 EXP. DATE: 12-31-2019
 CITY ENGINEER
 CITY OF ELK GROVE

DATE



CITY CLERK'S STATEMENT:

I, JASON LINDGREN, CITY CLERK OF THE CITY OF ELK GROVE, HEREBY STATE THAT THE CITY COUNCIL OF THE CITY OF ELK GROVE HAS APPROVED THIS FINAL MAP OF SUBDIVISION NO. 15-050 MILESTONE SUBDIVISION AND HAS ACCEPTED IN FEE SIMPLE LOT D AND ACCEPTED ON BEHALF OF THE PUBLIC SUBJECT TO IMPROVEMENT, WAYNE HEINTZ STREET, WYLAND DRIVE, MILEPOST CIRCLE, TRAVELER COURT, BLACK SWAN DRIVE, ODYSSEY CIRCLE, LEGENDARY COURT, AND CHAROLAIS WAY FOR PUBLIC STREET PURPOSES. ACCEPTED THE EASEMENTS FOR PUBLIC UTILITY AND PEDESTRIAN WALKWAY PURPOSES AND ACCEPTED THE DEDICATION OF THE INGRESS AND EGRESS RIGHTS ALL AS OFFERED HEREON AND DO CONSENT TO THE ABANDONMENT OF THE DRAINAGE EASEMENT AND A PORTION OF THE IRREVOCABLE OFFER OF DEDICATION NOT SHOWN HEREON.

JASON LINDGREN, CITY CLERK
 CITY OF ELK GROVE, CALIFORNIA

DATE



SUBDIVISION NO. 15-050
MILESTONE SUBDIVISION
 A PORTION OF THE SOUTHWEST 1/4 OF SECTION 5
 T. 6N, R. 6E, MOUNT DIABLO MERIDIAN

CITY OF ELK GROVE, COUNTY OF SACRAMENTO,
 STATE OF CALIFORNIA
 AUGUST 2019 SCALE 1"=150' SHEET 2 OF 9



PEABODY ENGINEERING
 1700 ALHAMBRA BLVD., SUITE 102
 SACRAMENTO, CA 95811
 (916) 731-0000 OFFICE (916) 731-0009 FAX

BASIS OF BEARINGS:
 THE BASIS OF BEARING OF THIS SURVEY IS
 THE NORTH LINE OF THE SW 1/4 SECTION OF
 SECTION 5 AS SHOWN ON 382 B.M. 6,
 SUBDIVISION NO. 10-016 FLESTONE SOUTH,
 BEING N 89° 53' 56" E AND ESTABLISHED BY
 MONUMENTS FOUND AS SHOWN.

REFERENCE

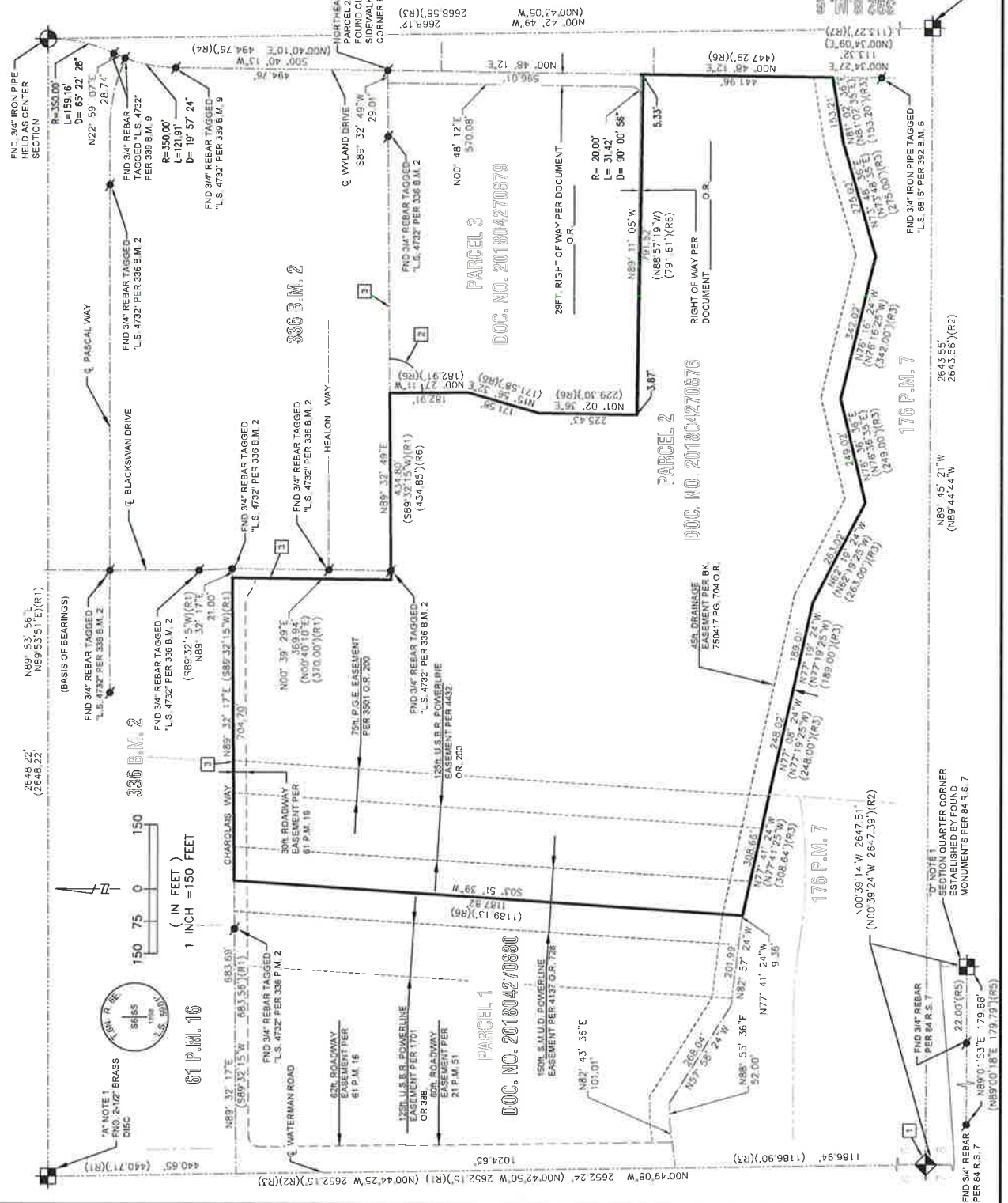
- (R1) 336 BM 2 (R7) 392 BM 6
- (R2) 319 BM 5
- (R3) 176 PM 7
- (R4) 339 BM 9
- (R5) 84 RS 7
- (R6) RECORD DATA PER 201804270876

RESOLUTION NOTES:

- 1 OBLITERATED SECTION CORNER ESTABLISHED BY LEAST SQUARES ADJUSTMENT (USE PER 336 B.M. 2 AND POSITIONS OF FOUND SECTION CORNER 'A' ESTABLISHED SECTION CORNER 'D' AND FOUND SECTION CORNER 'C').
- 2 HELD RECORD ANGLE PER B.L. (201804270876) AS 90°.
- 3 LINES ESTABLISHED BY FOUND MONUMENTS SET PER 336 B.M. 2 AND 339 B.M. 9 AS NOTED HEREON.

LEGEND

- FOUND SECTION CORNER AS NOTED
- FOUND 1/4 SECTION CORNER AS NOTED
- SECTION CENTER CORNER
- FOUND MONUMENT AS NOTED
- CENTERLINE



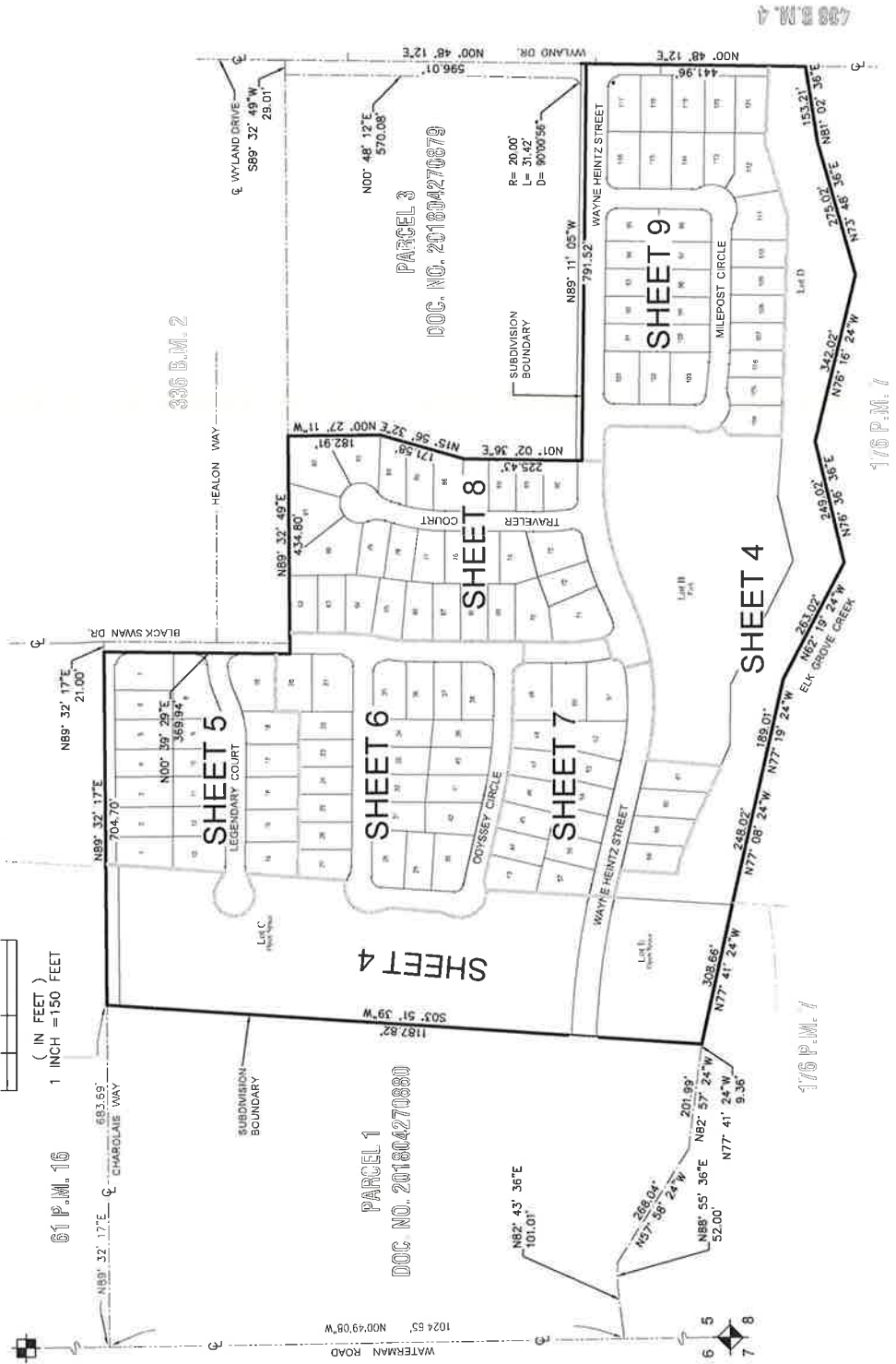
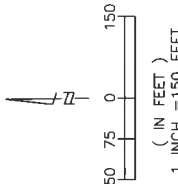
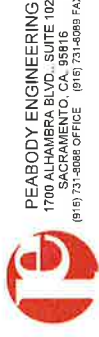
C' NOTE 1
 FND. 2-1/2" BRASS DISC
 DESTROYED BY FIELDSTONE
 SOUTH CONSTRUCTION. RESET
 WITH THIS MAP

D' NOTE 1
 SECTION QUARTER CORNER
 MONUMENTS PER 64 R.S. 7

SUBDIVISION BOUNDARY SHEET - INDEX SHEET

SUBDIVISION NO. 15-050
MILESTONE SUBDIVISION
 A PORTION OF THE SOUTHWEST 1/4 OF SECTION 5,
 T. 6N., R. 6E., MOUNT DIABLO MERIDIAN

CITY OF ELK GROVE, COUNTY OF SACRAMENTO,
 STATE OF CALIFORNIA
 AUGUST 2019 SCALE 1"=150'
 SHEET 3 OF 9



NOTES:

1. THIS SUBDIVISION CONTAINS 40.7 ACRES ± GROSS
2. ALL DIMENSIONS ALONG CURVED LINES ARE ARC LENGTH, DELTA AND RADIUS.
3. ALL DISTANCES SHOWN ARE IN FEET AND DECIMALS THEREOF.
4. THE SUBDIVISION CONTAINS 121 SINGLE FAMILY LOTS, 3 OPEN SPACE LOTS AND A PARK LOT.
5. ALL REAR LOT CORNERS AND ANGLE POINTS WILL BE SET WITH 5/8" REBAR, WITH PLASTIC CAP STAMPED 'LS 4600'. ALL FRONT LOT CORNERS WITH ATTACHED SIDEWALK WILL BE SET ON A 1 FOOT PROJECTION OF THE PROPERTY LINE. WHERE SIDEWALK IS DETACHED FRONT CORNERS WILL BE SET ON A FOOT OFFSET ON TO THE SIDEWALK FROM PROPERTY LINE WITH A 1" DIAMETER BRASS DISC STAMPED 'LS 4600'.

LEGEND

- FOUND SECTION CORNER AS NOTED
- FOUND 1/4 SECTION CORNER AS NOTED
- SECTION CENTER CORNER
- FOUND MONUMENT AS NOTED
- CENTERLINE
- SET 5/8" REBAR WITH PLASTIC CAP L.S. 4600 PER CITY STANDARDS FOR CENTERLINE
- SET 2" LONG X 1/4" DIA MAG NAIL TAGGED L.S. 4600. SET FLUSH WITH PAVEMENT
- SET 5/8" BRASS TAG L.S. 4600
- P.U.E. PUBLIC UTILITY EASEMENT
- P.E. PEDESTRIAN EASEMENT
- C CENTERLINE
- (OA) OVERALL DISTANCE
- NO INGRESS AND EGRESS RIGHTS
- MONUMENT PER CITY STD S 12-1-A-2 & 12-1-A-3
- (TYP.) TYPICAL

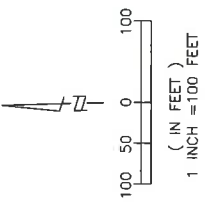
NOTE: SEE SHEET 2 FOR BASIS OF BEARINGS. SEE SHEET 3 FOR NOTES AND LEGEND.

SUBDIVISION NO. 15-050
MILESTONE SUBDIVISION

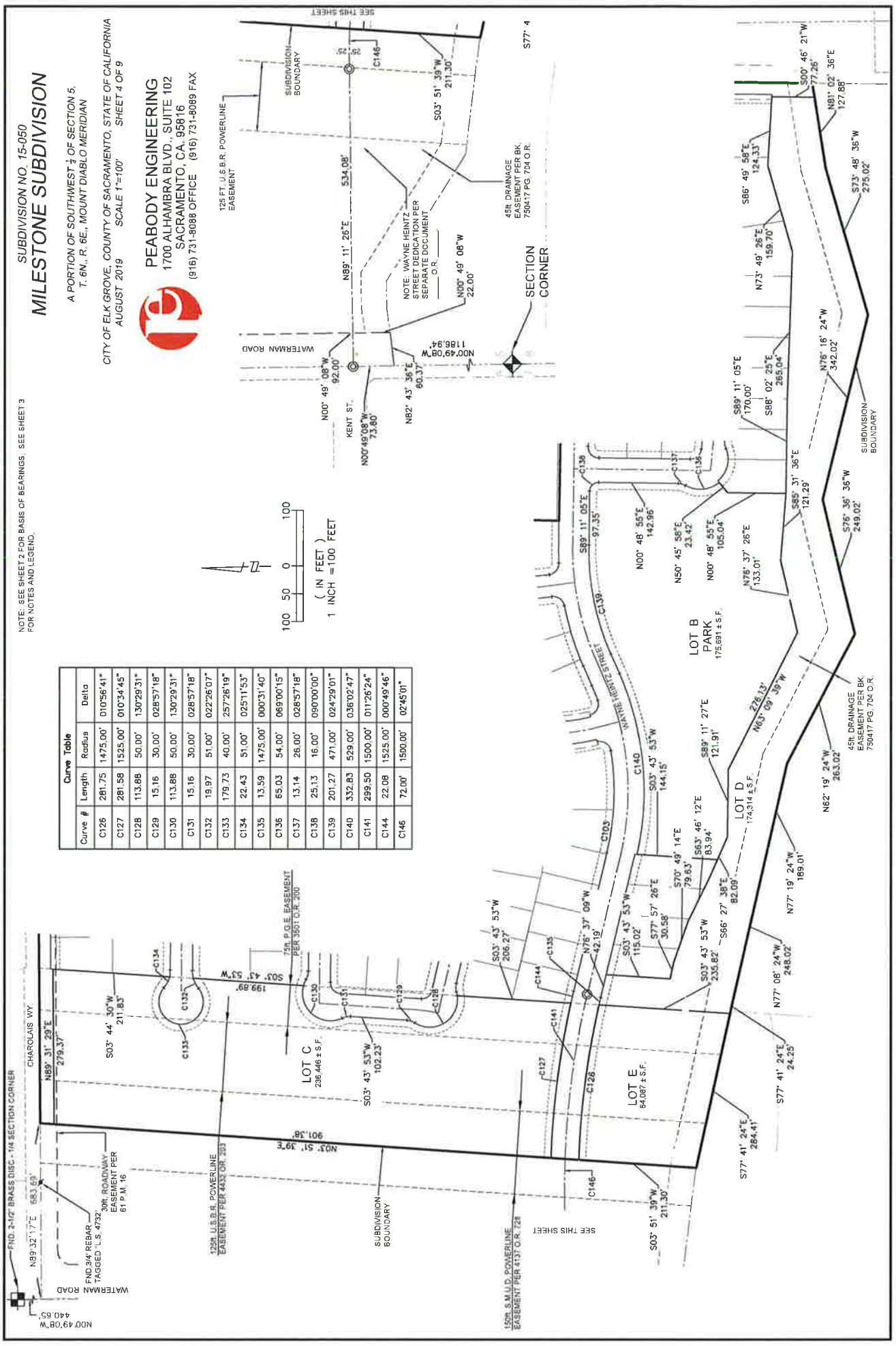
A PORTION OF SOUTHWEST 1/4 OF SECTION 5,
 T. 6N., R. 6E., MOUNT DIABLO MERIDIAN
 CITY OF ELK GROVE, COUNTY OF SACRAMENTO, STATE OF CALIFORNIA
 AUGUST 2019 SCALE 1"=100' SHEET 4 OF 9



PEABODY ENGINEERING
 1700 ALHAMBRA BLVD., SUITE 102
 SACRAMENTO, CA. 95816
 (916) 731-8088 OFFICE, (916) 731-8089 FAX



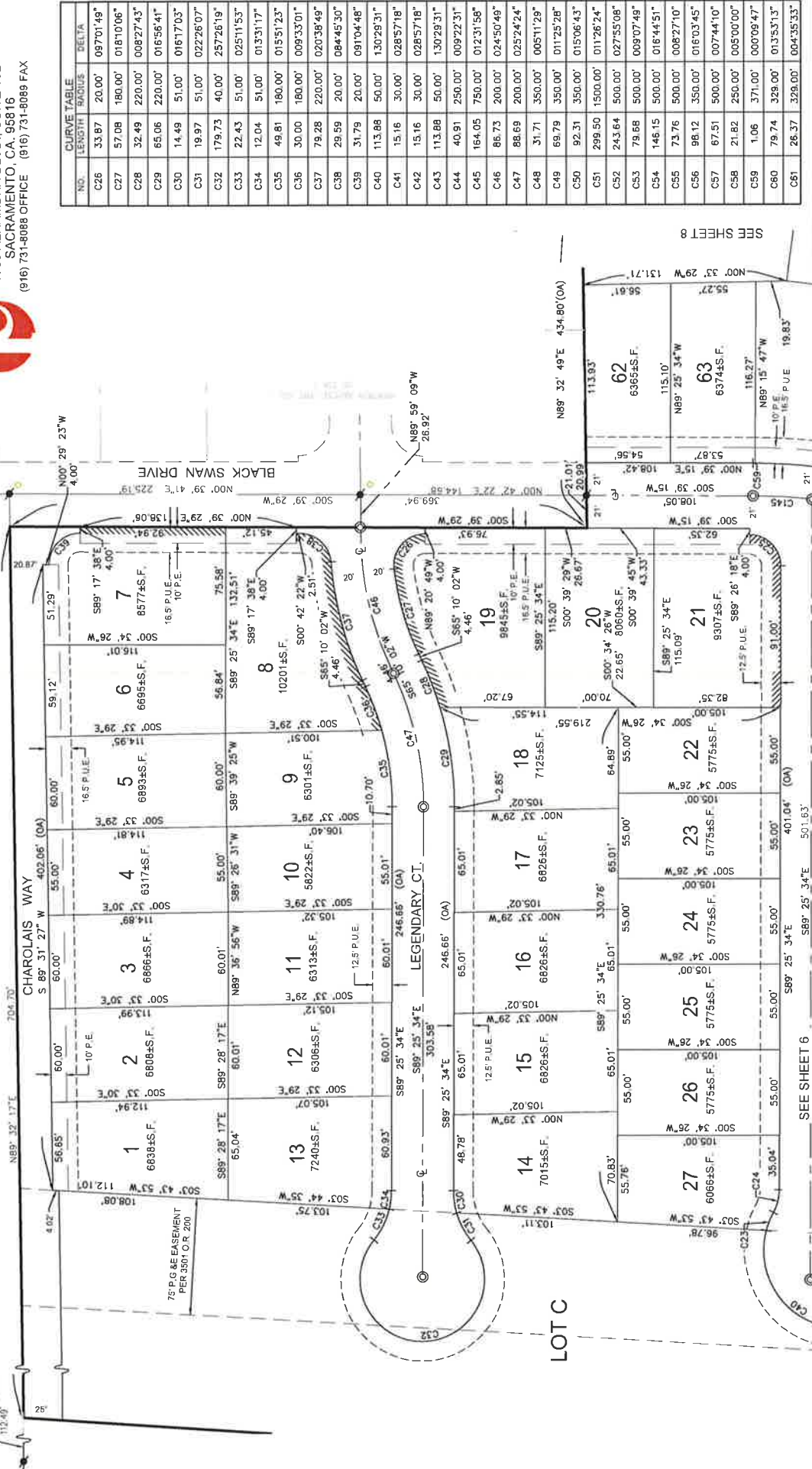
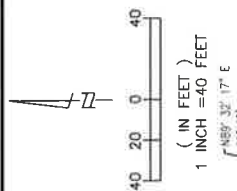
Curve #	Length	Radius	Delta
C126	281.75	1475.00'	010°56'41"
C127	281.58	1525.00'	010°34'45"
C128	113.88	50.00'	130°29'31"
C129	15.16	30.00'	028°57'18"
C130	113.88	50.00'	130°29'31"
C131	15.16	30.00'	028°57'18"
C132	19.97	51.00'	022°26'07"
C133	179.73	40.00'	257°26'19"
C134	22.43	51.00'	025°11'53"
C135	13.59	1475.00'	000°31'40"
C136	65.03	54.00'	069°00'15"
C137	13.14	26.00'	028°57'18"
C138	25.13	16.00'	090°00'00"
C139	201.27	471.00'	024°29'01"
C140	332.83	529.00'	036°02'47"
C141	299.50	1500.00'	011°26'24"
C144	22.08	1525.00'	000°49'46"
C146	72.00'	1500.00'	02°45'01"



SUBDIVISION NO. 15-050
MILESTONE SUBDIVISION
 A PORTION OF THE SOUTHWEST 1/4 OF SECTION 5,
 T. 6N., R. 6E., MOUNT DIABLO MERIDIAN
 CITY OF ELK GROVE, COUNTY OF SACRAMENTO, STATE OF CALIFORNIA
 AUGUST 2019 SCALE 1"=40' SHEET 5 OF 9



NOTE: SEE SHEET 12 FOR BASIS OF BEARINGS. SEE SHEET 3 FOR NOTES AND LEGEND.



NO.	CURVE TABLE	LENGTH	RADIUS	DELTA
C26	33.87	20.00'	097'01.48"	
C27	57.08	180.00'	018'10.06"	
C28	32.49	220.00'	008'27.43"	
C29	65.06	220.00'	016'56.41"	
C30	14.49	51.00'	016'17.03"	
C31	19.97	51.00'	022'26.07"	
C32	179.73	40.00'	257'26.19"	
C33	22.43	51.00'	025'11.53"	
C34	12.04	51.00'	013'31.17"	
C35	49.81	180.00'	015'51.23"	
C36	30.00	180.00'	009'33.01"	
C37	79.28	220.00'	020'38.48"	
C38	29.59	20.00'	08'44.53"	
C39	31.79	20.00'	09'10.48"	
C40	113.88	50.00'	130'29.31"	
C41	15.16	30.00'	028'57.18"	
C42	15.16	30.00'	028'57.18"	
C43	113.88	50.00'	130'29.31"	
C44	40.91	250.00'	009'22.31"	
C45	164.05	750.00'	012'31.58"	
C46	86.73	200.00'	024'50.49"	
C47	88.69	200.00'	025'24.24"	
C48	31.71	350.00'	005'11.29"	
C49	69.79	350.00'	011'25.28"	
C50	92.31	350.00'	015'06.43"	
C51	299.50	1500.00'	011'26.24"	
C52	243.64	500.00'	027'55.08"	
C53	79.68	500.00'	009'07.48"	
C54	146.15	500.00'	016'44.51"	
C55	73.76	500.00'	008'27.10"	
C56	96.12	350.00'	016'03.45"	
C57	67.51	500.00'	007'44.10"	
C58	21.82	250.00'	005'00.00"	
C59	1.06	371.00'	000'09.47"	
C60	79.74	328.00'	013'53.13"	
C61	26.37	328.00'	004'35.33"	

SEE SHEET 8

SEE SHEET 6

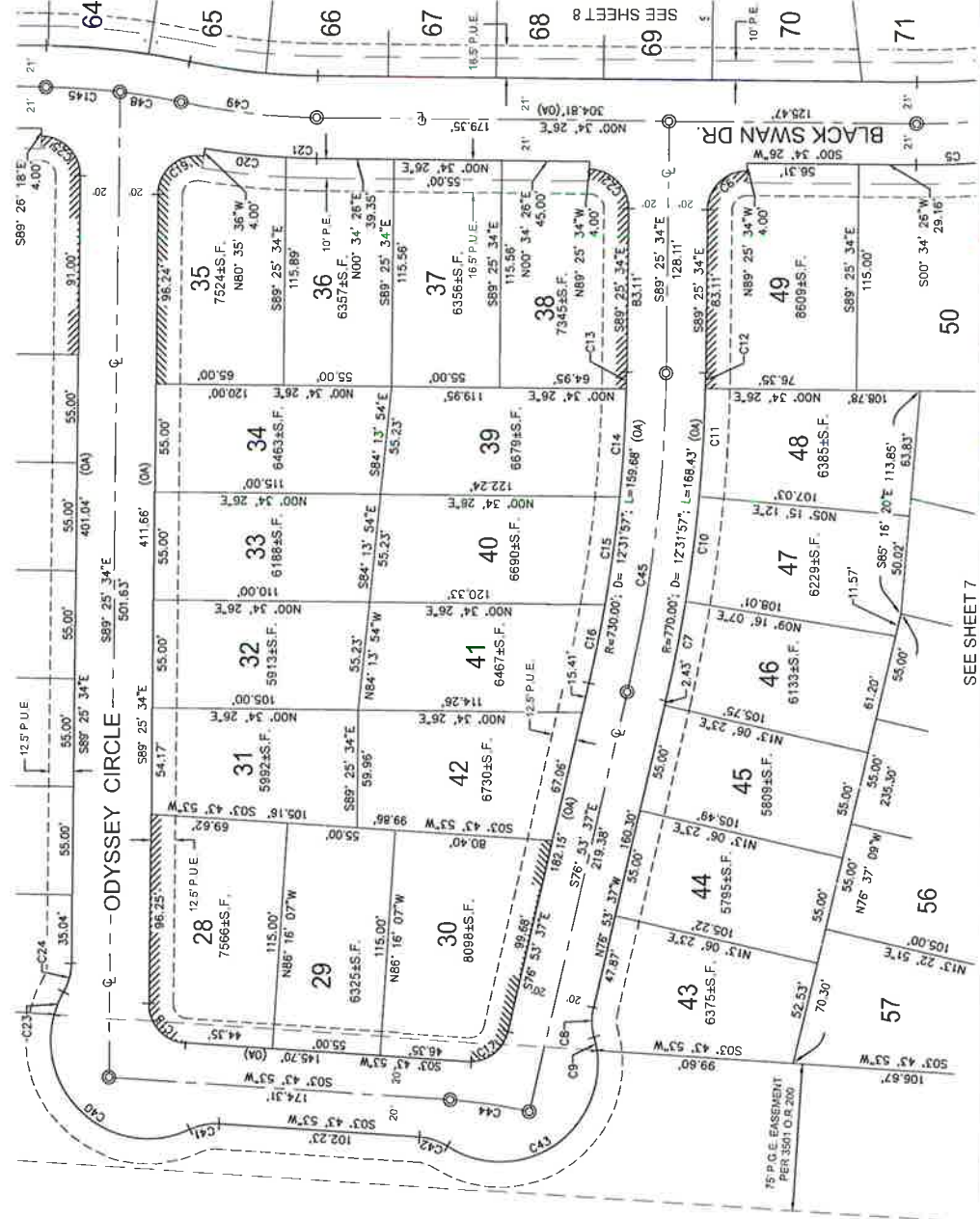
SUBDIVISION NO. 15-050
MILESTONE SUBDIVISION
 A PORTION OF THE SOUTHWEST 1/4 OF SECTION 5,
 T. 6N., R. 6E., MOUNT DIABLO MERIDIAN

CITY OF ELK GROVE, COUNTY OF SACRAMENTO, STATE OF CALIFORNIA
 AUGUST 2019 SCALE 1"=40' SHEET 6 OF 9

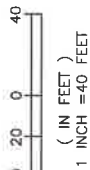


PEABODY ENGINEERING
 1700 AL HAMBRA BLVD., SUITE 102
 SACRAMENTO, CA, 95816
 (916) 731-8088 OFFICE (916) 731-8089 FAX

CURVE TABLE		CURVE TABLE	
NO.	LENGTH	RADIUS	DELTA
C41	15.16	30.00'	028°57'18"
C42	15.16	30.00'	028°57'18"
C43	113.88	50.00'	130°29'31"
C44	40.91	250.00'	009°22'31"
C45	164.05	750.00'	012°31'58"
C46	86.73	200.00'	024°50'49"
C47	88.69	200.00'	025°24'24"
C48	31.71	350.00'	005°11'29"
C49	69.79	350.00'	011°25'28"
C50	92.31	350.00'	015°06'43"
C51	299.50	1500.00'	011°26'24"
C52	243.64	500.00'	027°55'08"
C53	79.68	500.00'	009°07'49"
C54	146.15	500.00'	016°44'51"
C55	73.76	500.00'	008°27'10"
C56	98.12	350.00'	016°03'45"
C57	67.51	500.00'	007°44'10"
C145	38.08	350.00'	006°13'58"



NOTE: SEE SHEET 2 FOR BASIS OF BEARINGS. SEE SHEET 3 FOR NOTES AND LEGEND.



SEE SHEET 5

SEE SHEET 7

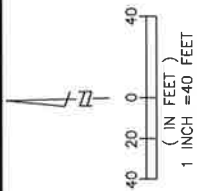
SUBDIVISION NO. 15-050
MILESTONE SUBDIVISION
 A PORTION OF THE SOUTHWEST 1/4 OF SECTION 5,
 T. 6N., R. 6E., MOUNT DIABLO MERIDIAN
 CITY OF ELK GROVE, COUNTY OF SACRAMENTO, STATE OF CALIFORNIA
 AUGUST 2019 SCALE 1"=40' SHEET 7 OF 9

PEABODY ENGINEERING
 1700 ALHAMBRA BLVD., SUITE 102
 SACRAMENTO, CA, 95816
 (916) 731-8088 OFFICE (916) 731-8088 FAX

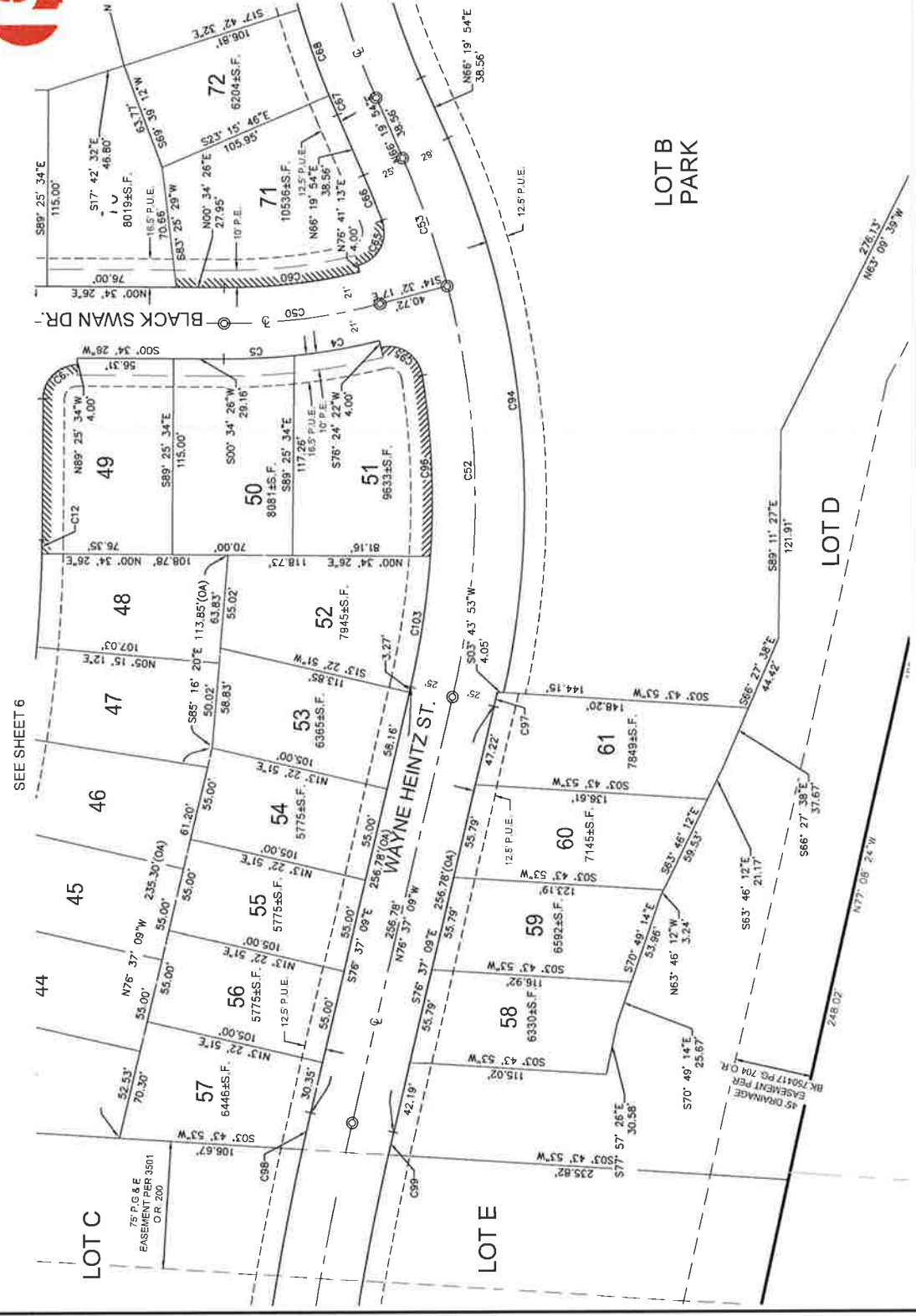


CURVE NO.	LENGTH	RADIUS	DELTA
C4	50.81	371.00'	007°50'50"
C5	40.93	371.00'	008°19'14"
C6	31.42	20.00'	090°00'00"
C12	7.89	770.00'	000°35'14"
C50	92.31	350.00'	015°06'43"
C52	243.64	500.00'	027°55'08"
C53	79.68	500.00'	009°07'49"
C60	79.74	329.00'	01°35'31"
C65	33.83	20.00'	096°54'35"
C66	26.57	475.00'	003°26'44"
C67	12.40	525.00'	001°21'13"
C68	53.50	529.00'	005°50'18"
C94	332.83	529.03'	036°02'47"
C95	33.07	20.00'	094°43'30"
C96	106.67	475.00'	012°51'59"
C97	8.56	525.00'	000°56'02"
C98	22.08	1525.00'	000°49'46"
C99	13.59	1475.00'	000°31'40"
C100	74.04	1525.00'	002°46'54"
C101	69.96	1475.00'	002°43'04"
C103	77.79	475.00'	009°23'00"
C104	31.42	20.00'	090°00'00"

SEE SHEET 8



NOTE: SEE SHEET 2 FOR BASIS OF BEARINGS, SEE SHEET 3 FOR NOTES AND LEGEND.



SEE SHEET 6

LOT C

LOTE

LOT B
PARK

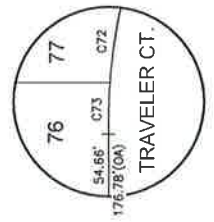
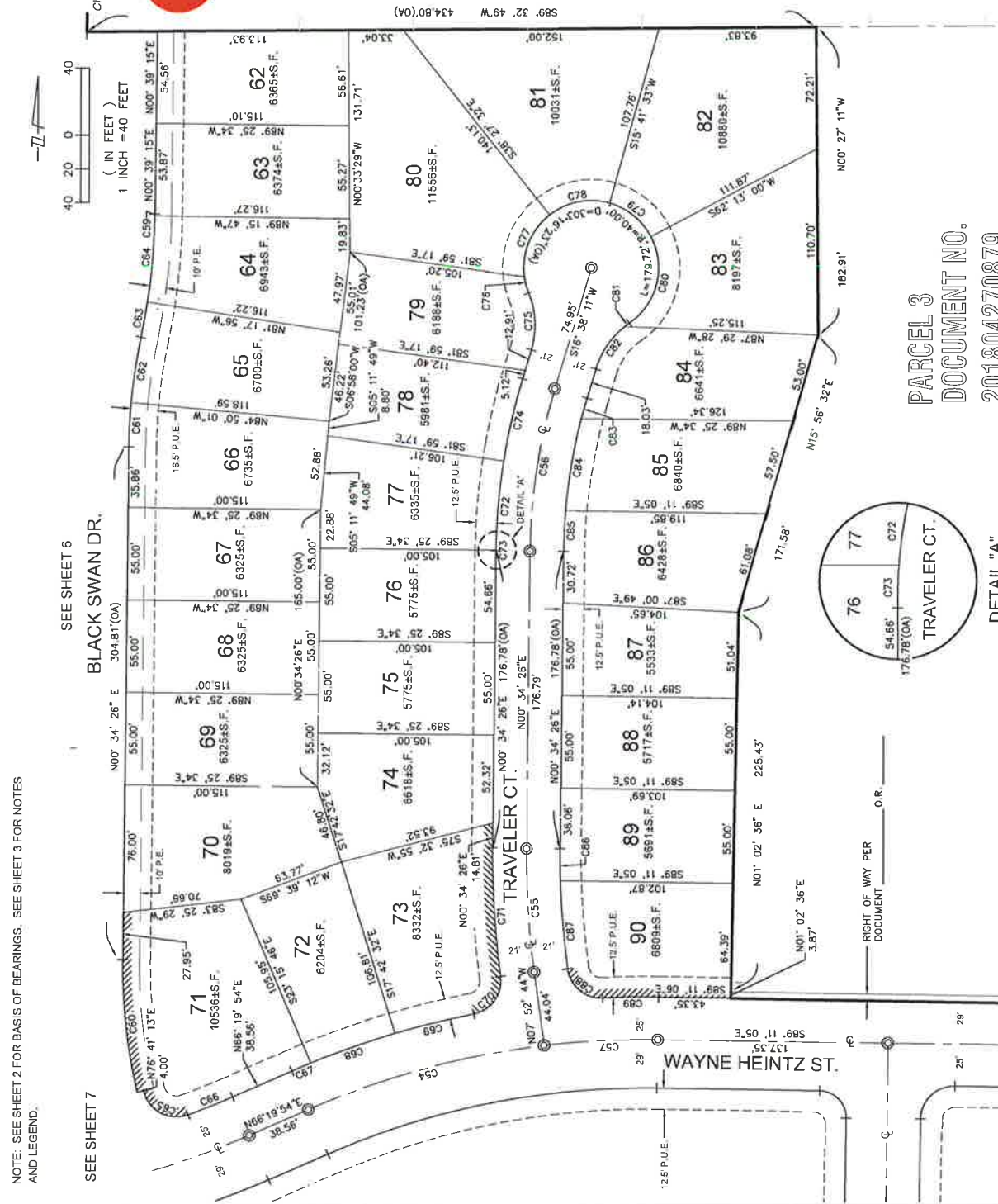
LOT D

SUBDIVISION NO. 15-050
MILESTONE SUBDIVISION
 A PORTION OF THE SOUTHWEST 1/4 OF SECTION 5,
 T. 6N., R. 6E., MOUNT DIABLO MERIDIAN
 CITY OF ELK GROVE, COUNTY OF SACRAMENTO, STATE OF CALIFORNIA
 AUGUST 2019 SCALE 1"=40' SHEET 9 OF 9



PEABODY ENGINEERING
 1700 ALHAMBRA BLVD., SUITE 102
 SACRAMENTO, CA. 95816
 (916) 731-8088 OFFICE (916) 731-8089 FAX

NO.	CURVE LENGTH	RADIUS	DELTA
C54	146.15	500.00'	016°44'51"
C55	73.76	500.00'	008°27'10"
C56	98.12	350.00'	015°03'45"
C57	67.51	500.00'	007°44'10"
C59	1.06	371.00'	000°09'47"
C60	79.74	329.00'	013°53'13"
C61	26.37	329.00'	004°35'33"
C62	39.23	329.00'	006°49'55"
C63	21.35	371.00'	003°17'50"
C64	51.57	371.00'	007°57'51"
C65	33.83	20.00'	096°54'35"
C66	26.57	475.00'	003°26'44"
C67	12.40	525.00'	001°21'13"
C68	53.50	525.00'	005°50'18"
C69	48.28	525.00'	005°16'08"
C70	30.25	20.00'	086°39'34"
C71	76.60	520.00'	008°26'26"
C72	53.25	370.00'	008°14'43"
C73	0.34	370.00'	000°03'08"
C74	50.15	370.00'	007°45'55"
C75	34.46	51.00'	038°43'09"
C76	9.83	40.00'	014°04'28"
C77	41.57	40.00'	059°32'58"
C78	37.80	40.00'	054°09'05"
C79	32.48	40.00'	046°31'27"
C80	58.04	40.00'	083°08'21"
C81	3.28	51.00'	003°41'17"
C82	31.18	51.00'	035°01'53"
C83	12.53	330.00'	002°10'29"
C84	55.69	330.00'	009°40'11"
C85	24.29	330.00'	004°13'06"
C86	18.94	480.00'	002°15'
C87	52.68	480.00'	008°17'18"
C88	29.61	20.00'	084°49'05"
C89	33.07	525.00'	003°36'31"



PARCEL 3
DOCUMENT NO.
201804270879

SEE SHEET 9

NOTE: SEE SHEET 2 FOR BASIS OF BEARINGS. SEE SHEET 3 FOR NOTES AND LEGEND.

SEE SHEET 6

BLACK SWAN DR.

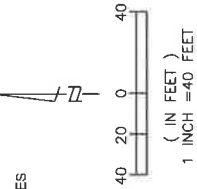
SEE SHEET 7

336 B.M. 2

RIGHT OF WAY PER DOCUMENT O.R.

DETAIL "A"
 N.T.S.

NOTE: SEE SHEET 2 FOR BASIS OF BEARINGS, SEE SHEET 3 FOR NOTES AND LEGEND.



PARCEL 3
DOC. NO. 201804270879

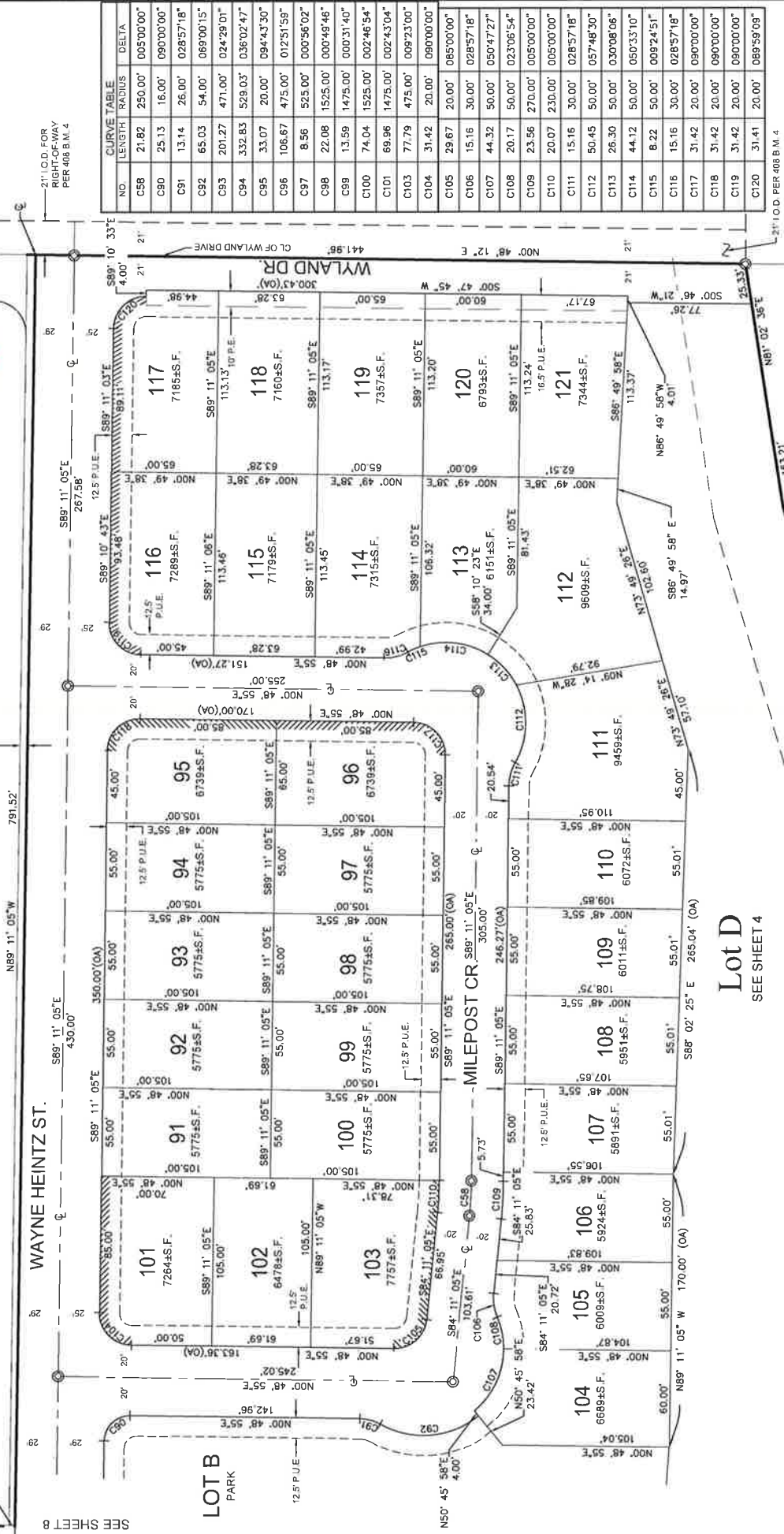
SUBDIVISION NO. 15-060
MILESTONE SUBDIVISION
A PORTION OF THE SOUTHWEST 1/4 OF SECTION 5,
T. 6N., R. 6E., MOUNT DIABLO MERIDIAN
CITY OF ELK GROVE, COUNTY OF SACRAMENTO, STATE OF CALIFORNIA
AUGUST 2019 SCALE 1"=100' SHEET 9 OF 9

PEABODY ENGINEERING
1700 ALHAMBRA BLVD., SUITE 102
SACRAMENTO, CA. 95816
(916) 731-8088 OFFICE (916) 731-8089 FAX



RIGHT OF WAY PER DOCUMENT
O.R.

N01° 02' 36"E
3.87'



CURVE TABLE		DELTA	
NO.	LENGTH	RADIUS	
C58	21.82	250.00'	005°00'00"
C90	25.13	16.00'	090°00'00"
C91	13.14	26.00'	028°57'18"
C92	65.03	54.00'	089°00'15"
C93	201.27	471.00'	024°29'01"
C94	332.83	529.03'	036°02'47"
C95	33.07	20.00'	084°43'30"
C96	106.67	475.00'	012°51'58"
C97	8.56	525.00'	000°56'02"
C98	22.08	1525.00'	000°48'46"
C99	13.59	1475.00'	000°31'40"
C100	74.04	1525.00'	002°46'54"
C101	69.96	1475.00'	002°43'04"
C103	77.79	475.00'	009°23'00"
C104	31.42	20.00'	090°00'00"
C105	29.67	20.00'	085°00'00"
C106	15.16	30.00'	028°57'18"
C107	44.32	50.00'	050°47'27"
C108	20.17	50.00'	023°06'54"
C109	23.56	270.00'	005°00'00"
C110	20.07	230.00'	005°00'00"
C111	15.16	30.00'	028°57'18"
C112	50.45	50.00'	057°46'30"
C113	26.30	50.00'	030°08'06"
C114	44.12	50.00'	050°33'10"
C115	8.22	50.00'	009°24'51"
C116	15.16	30.00'	028°57'18"
C117	31.42	20.00'	090°00'00"
C118	31.42	20.00'	090°00'00"
C119	31.42	20.00'	090°00'00"
C120	31.41	20.00'	089°59'08"

Lot D
SEE SHEET 4

SEE SHEET 8

CERTIFICATION
ELK GROVE CITY COUNCIL RESOLUTION NO. 2019-197

STATE OF CALIFORNIA)
COUNTY OF SACRAMENTO) ss
CITY OF ELK GROVE)

I, Jason Lindgren, City Clerk of the City of Elk Grove, California, do hereby certify that the foregoing resolution was duly introduced, approved, and adopted by the City Council of the City of Elk Grove at a regular meeting of said Council held on September 11, 2019 by the following vote:

AYES: COUNCILMEMBERS: Ly, Hume, Detrick, Nguyen, Suen

NOES: COUNCILMEMBERS: None

ABSTAIN: COUNCILMEMBERS: None

ABSENT: COUNCILMEMBERS: None



**Jason Lindgren, City Clerk
City of Elk Grove, California**